

eibPort

Data Warehouse Client Data Acquisition Module



for Windows 2000/XP

Automatic Data Acquisition via LAN oder Internet

Content:

eibPort Data Warehouse Client	Seite 3
Client License	Seite 4
The Windows of Data Warehouse	Seite 5
eibPort Server	Seite 5
eibPort Address Reporting	Seite 6
eibPort Data Acquisition	Seite 7
eibPort Address reporting ETS-Data	Seite 8
System Information	Seite 9
Data Acquisition Module	Seite 10
eibPort Data Warehouse Test	Seite 11

eibPort Data Warehouse Client (DW):

eibPort Data Warehouse Client (DW)

The eibPort Data Warehouse client software is an application that provides:

- a) server definitions and configuration of up to 10 *eibPorts*
- b) fetching the data from the *eibports*, figuring the data in table form and exporting data filtered by EIB group addresses into text files.

The data acquisition module transmits the data automatically from the *eibPort* servers in adjustable intervals.

eibPort Data Warehouse is available in three license versions:

Demo Version: limited to one *eibPort* server and 20 000 telegrams

Single Version (individual): for one *eibPort* server, unlimited amount of telegrams.

Full Version (standard): up to 10 *eibPort* server, unlimited amount of telegrams.

The installer stores the Data Warehouse software by default in the directory C://programs/eibPort DW.

The eibPort Data Warehouse Client is the administration module for the *eibPort* server. The Data Acquisition Module (DAM) executes the data acquisition automatically for a low number of *eibPorts* at low data traffic (Up to 10 *eibPorts* with about 5000 telegrams per *eibPort* per day).

Both programs base on the Microsoft Access data base. That allows the administration of simple objects with low data traffic.

Client License:

Before you can use eibPort Data Warehouse Client you must license the software. For this start the software and click on the flag System Information. Click on *Lizenz eingeben* (enter license) and fill in the fields:

Software Lizenz (software license): choose the version

Firma (Company): enter the company name your version is licensed to

Benutzer (User): enter your user name

Lizenzcode (License code): enter the license code you received. Notice the upper and lower case.

The program windows of Data Warehouse:

Data Warehouse is separated in five program windows. To put a window to the foreground click on the corresponding flag.

In the following chapters you learn more about the program windows.

4

eibPort Server:

Here the singular *eibPort* servers are defined which the eibPort Data Warehouse client shall administrate. Required is a TCP/IP connection. *eibPort* server is accessible by the IP address or by a DNS name.

To add an *eibPort* server double-click on *Server hinzufügen* (add server). In the dialogue window enter the following parameters:

Server Name: Description of the *eibPort* (only for displaying)

Hostname: the IP address or the DNS name

Port: the BMX server port of the *eibPort* (standard is 1735)

Aktiv (actice): indicates, if the *eibPort* server is active

ETS Projektdatei laden (load ETS data): here you can load an ETS exported project file (see chapter eibPort ETS Auswertung)

Polling Interval: enter in minutes how often the eibPort Data Warehouse software shall transmit the current data from the *eibPort* server. The time interval is assigned to the Data Acquisition Module (see chapter DAM).

Click on Speichern (Save) to save the options.

5

eibPort Adressen Auswertung (eibPort address analysis):

Here the singular *eibPort* servers are defined which the eibPort Data Warehouse client shall administrate.

Zeit	Gruppe...	V...	R...	Funktion
05.04.2004 18:36:14	1/0/001	F...	ext.	Ext_Schalt
05.04.2004 20:00:04	1/0/001	F...	ext.	Ext_Schalt
05.04.2004 20:00:04	1/0/001	F...	ext.	Ext_Schalt
05.04.2004 20:00:04	1/0/001	F...	ext.	Ext_Schalt
05.04.2004 20:30:03	1/0/001	F...	ext.	Ext_Schalt
05.04.2004 20:30:03	1/0/001	F...	ext.	Ext_Schalt
05.04.2004 20:30:03	1/0/001	F...	ext.	Ext_Schalt
05.04.2004 21:00:04	1/0/001	F...	ext.	Ext_Schalt

Choose all or one certain group address from the drop down menu. The data of the marked up *eibPort* server will be displayed. By clicking on a column title in the table, you can re-sort the data.

To export the currently displayed data, double-click the table. A dialogue box will appear in which you can assign a file name and the place to save.

If you want to import the data to e.g. MS Excel choose the file type Text files by opening in Excel.

eibPort Datenerfassung (eibPort data collection):

Here you can transmit the data manually from the *eibPort* servers into eibPort Data Warehouse client. Mark an *eibPort* server with the mouse and start the transmission with a click on Server-Daten übertragen (transmit server data). The transmission may take some time depending on the amount of data. In the first step the data is *read* and in the second step *calculated* which means that only newest data is added to the data base. The progress of the transmission is indicated at the bottom of the window.

eibPort ETS Auswertung (eibPort ETS analysis):

You can export ETS projects from the ETS (Eiba Tool Software) into an esf file using the OPC Export (ETS version 2.3 and higher) and load it in eibPort Data Warehouse Client. Under the flag *eibPort ETS Auswertung (eibPort ETS analysis)* all group addresses will be listed additionally with name, description and EIS-Type.

Gruppe...	Name	Beschreibung	EIS	Prio...	Da
10/0/001	Schalten/Dimmen rech...	Schalten 6152 Leuchte 1 rechts	EIS 1 Switching ...	Low	97
10/0/002	Schalten/Dimmen rech...	Schalten 6152 Leuchte 2 rechts	EIS 1 Switching ...	Low	76
10/0/003	Schalten/Dimmen rech...	Schalten 6155	EIS 1 Switching ...	Low	11
10/0/004	Schalten/Dimmen rech...	Dimmen 6155	EIS 2 Dimming ...	Low	48
10/0/005	Schalten/Dimmen rech...	Wert 6155	Uncertain (1 Byte)	Low	70
11/0/001	Jalousie rechts.Neue M...	Neue Untergruppe	EIS 1 Switching ...	Low	10
11/0/002	Jalousie rechts.Neue M...	Neue Untergruppe	EIS 1 Switching ...	Low	14
12/0/001	Heizung rechts.Neue M...	Heizen Ein/Aus	EIS 1 Switching ...	Low	43
12/0/002	Heizung rechts.Neue M...	Sollwert	Uncertain (2 Byte)	Low	45
12/0/003	Heizung rechts.Neue M...	Istwert	Uncertain (2 Byte)	Low	43
12/0/004	Heizung rechts.Neue M...	Komfortbetrieb	EIS 1 Switching ...	Low	43
12/0/005	Heizung rechts.Neue M...	Nachtbetrieb	EIS 1 Switching ...	Low	0
12/0/006	Heizung rechts.Neue M...	Frostschutz	EIS 1 Switching ...	Low	0
13/0/000	Leistung.Neue Mittelgru...	Zählerstand	Uncertain (4 Byte)	Low	26
13/5/001	Leistung.Neue Mittelgru...	mentane Leistung	Uncertain (2 Byte)	Low	0

To load an esf file open the window *Server Eigenschaften (Server properties)* under the flag *eibPort Server* by double-

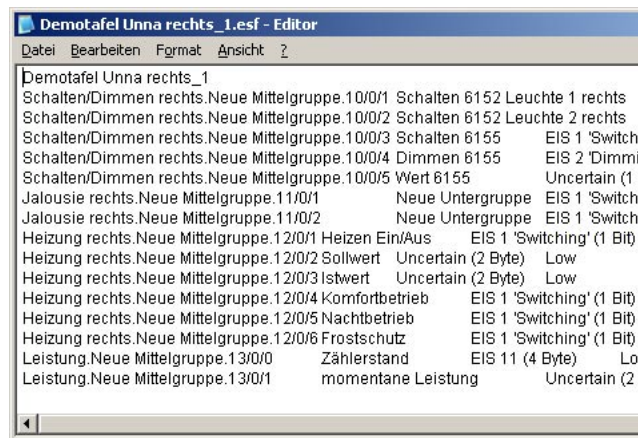
clicking on a *eibPort* server. Click on *ETS Projektdatei laden (load ETS data)* and choose the *esf* file.

Under the flag *eibPort ETS Auswertung (eibPort ETS analysis)* you now see all group addresses with further information.

To export the data of a group address double-click in a row. A dialogue box appears in which you can assign the file name and the place to save. By holding the CTRL button you can choose several group addresses the same time.

If you want to import the data to e.g. MS Excel choose the file type Text files at opening in Excel.

Maybe you find in the table in the column EIS the entry uncertain. That is an error of the export function of the ETS. You may correct the EIS types manually. Open the *esf* file with a text editor and replace the uncertain entries with the respective EIS type. Afterwards reload the *esf* file like described above.



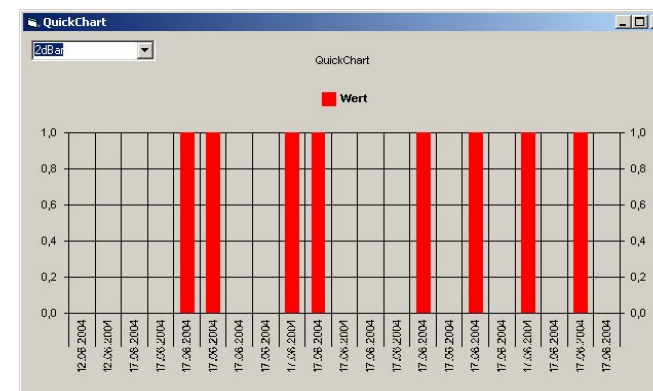
Picture: Example of a *esf* file opened in a Windows-Editor. Please replace «uncertain» by the correct EIS-Type.

Quickchart

With the quickchart function you can display the switch states of a group address during the last saved duration in a graphic. You can choose from several 2d and 3d diagram

types. The horizontal axis in each case shows the time, the vertical axis shows the value. The quickchart is just suited for a quick overview and not for an analysis.

For a graphical display of the states of a group address, mark a row with the mouse and click on the button *Quickchart*. From the drop down menu in the diagram window you can choose a diagram type.



Picture: Quickchart-Demonstration

Tageswerte (day values)

The function *Tageswerte (day values)* supplies the switched-on-time of a group address per day in per cent and saves it in a text file. It supports the analysis of power consumption data. This way you can for example display how long (in per cent) a light is switched on a day.

To save the day values choose a group address with the mouse and click on the button *Tageswerte*. A dialogue box appears in which you can assign the file name and the place to save.

System Information:

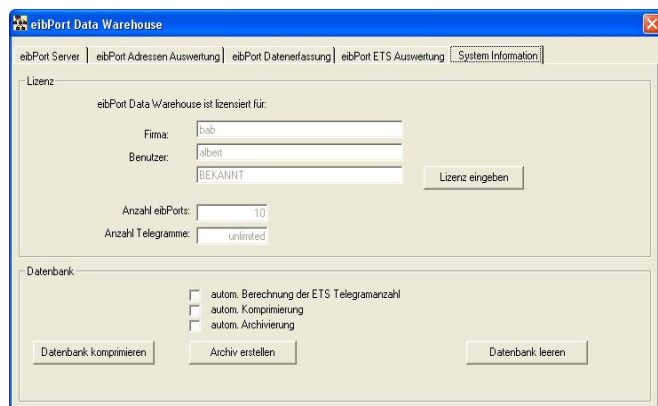
Here you see the license information. By the first run of the software you have to enter the license data. For this see the chapter *Client lizenzieren (license client)*.

Datenbank (Data base)

Manually operated:

All data is stored in a Microsoft Access data base. The data base may increase by and by and allocate several hundred MB. You can compress the data base under the flag *System Information*. Click on the button *Datenbank komprimieren (compress data base)*.

With *Datenbank leeren (Clear data base)* you can delete all entries in the data base. Thereby also the license information gets lost and it has to be entered again.



You can also archive the database. All data of the last month will be saved in a new folder called "archive". Every month (a year) is signed out automatically.

Automatic

Sign up the boxes these operation (Compression and Archiv) will be done automatically. At the end of a month the archive will be written and after every session of DAM the database will be compressed. In addition the sign up box Berechnung der ETS-Teklegrammanzahl will mark every telegram.

Data Acquisition Module (DAM)

The Data Acquisition Module is a small application that is responsible for the automatic transmission from the singular eibPorts. It can connect up to 10 eibPorts (depending on the license version) via the LAN or the internet and download the current data. It runs in the background and appears in the taskbar. At the same time it is installed in the auto run directory of MS Windows. The Data Acquisition Module stores the latest telegrams directly in the Microsoft Access data base. The time cycle can be assigned in the server definitions (see chapter eibPort Server).

eibPort Data Warehouse Test

To Test eibPort Data Warehouse Client connect your PC via Internet with our eibPort Server in Unna, Germany.

Accses data:

Server Name: eibPort Unna

Hostname: ep-demo.gotdns.org

Port: 1735

Please test every function.

b.a.b-technologie gmbh
Heinrich-Hertz-Str.4

59423 Unna

Tel. 0049 23 03 25 30 1-0
Fax. 0049 23 03 25 30 1-490
E-Mail. info@bab-tec.de
Internet: www.bab-tec.de

